



CITY OF HOBART

AGENDA

Parks and Recreation Committee Meeting

Open Portion

Thursday, 10 August 2017

at 5.00 pm

Lady Osborne Room, Town Hall

THE MISSION

Our mission is to ensure good governance of our capital City.

THE VALUES

The Council is:

about people	We value people – our community, our customers and colleagues.
professional	We take pride in our work.
enterprising	We look for ways to create value.
responsive	We're accessible and focused on service.
inclusive	We respect diversity in people and ideas.
making a difference	We recognise that everything we do shapes Hobart's future.

ORDER OF BUSINESS

Business listed on the agenda is to be conducted in the order in which it is set out, unless the committee by simple majority determines otherwise.

APOLOGIES AND LEAVE OF ABSENCE

1. CO-OPTION OF A COMMITTEE MEMBER IN THE EVENT OF A VACANCY	4
2. CONFIRMATION OF MINUTES.....	4
3. CONSIDERATION OF SUPPLEMENTARY ITEMS	4
4. INDICATIONS OF PECUNIARY AND CONFLICTS OF INTEREST	5
5. TRANSFER OF AGENDA ITEMS.....	5
6. REPORTS	6
6.1 Bushfire Management 2017/2018.....	6
7. COMMITTEE ACTION STATUS REPORT	29
7.1 Committee Actions - Status Report.....	29
8. QUESTIONS WITHOUT NOTICE	44
9. CLOSED PORTION OF THE MEETING.....	45

Parks and Recreation Committee Meeting (Open Portion) held Thursday, 10 August 2017 at 5.00 pm in the Lady Osborne Room, Town Hall.

COMMITTEE MEMBERS

Reynolds (Chairman)
Briscoe
Ruzicka
Sexton
Harvey

Apologies: Nil.

Leave of Absence:

Alderman J R Briscoe.
Alderman W F Harvey.

ALDERMEN

Lord Mayor Hickey
Deputy Lord Mayor Christie
Zucco
Burnet
Cocker
Thomas
Denison

1. CO-OPTION OF A COMMITTEE MEMBER IN THE EVENT OF A VACANCY

2. CONFIRMATION OF MINUTES

The minutes of the Open Portion of the Parks and Recreation Committee meeting held on [Thursday, 13 July 2017](#), are submitted for confirming as an accurate record.

3. CONSIDERATION OF SUPPLEMENTARY ITEMS

Ref: Part 2, Regulation 8(6) of the *Local Government (Meeting Procedures) Regulations 2015*.

Recommendation

That the Committee resolve to deal with any supplementary items not appearing on the agenda, as reported by the General Manager.

4. INDICATIONS OF PECUNIARY AND CONFLICTS OF INTEREST

Ref: Part 2, Regulation 8(7) of the *Local Government (Meeting Procedures) Regulations 2015*.

Aldermen are requested to indicate where they may have any pecuniary or conflict of interest in respect to any matter appearing on the agenda, or any supplementary item to the agenda, which the committee has resolved to deal with.

5. TRANSFER OF AGENDA ITEMS

Regulation 15 of the *Local Government (Meeting Procedures) Regulations 2015*.

A committee may close a part of a meeting to the public where a matter to be discussed falls within 15(2) of the above regulations.

In the event that the committee transfer an item to the closed portion, the reasons for doing so should be stated.

Are there any items which should be transferred from this agenda to the closed portion of the agenda, or from the closed to the open portion of the agenda?

6 REPORTS

6.1 Bushfire Management 2017/2018 File Ref: F17/93823

Report of the (Acting) Team Leader Fire and Biodiversity and the (Acting) Director Parks and City Amenity of 4 August 2017 and attachments.

Delegation: Council

REPORT TITLE: BUSHFIRE MANAGEMENT 2017/2018

REPORT PROVIDED BY: (Acting) Team Leader Fire and Biodiversity
(Acting) Director Parks and City Amenity

1. Report Purpose and Community Benefit

- 1.1. This report addresses a range of issues relating to the City's Bushfire Management Program as listed below.
 - 1.1.1. Review and proposed replacement of the City's strategic framework for bushfire management operations.
 - 1.1.2. Adoption of new State Government guidelines for fuel breaks and program of works to rectify defects in City's fuel break network.
 - 1.1.3. Outcome of the 2016/2017 bushfire hazard reduction program and the proposed program for 2017/2018.

2. Report Summary

- 2.1. The Parks and Recreation Committee at its meeting held on 13 July 2017, considered the City's management of bushfire whereat the matter was deferred to allow Aldermen the opportunity to attend an onsite visit to bushfire management areas and to allow a briefing to be held.
- 2.2. Site visits and subsequent briefing was made available to Aldermen on Tuesday 1 August.
- 2.3. Accordingly the issue of bushfire management is resubmitted.
- 2.4. **City's Strategic Framework for Bushfire Management**
 - 2.4.1. The City's strategic framework for bushfire management is due for review. This includes the City's existing Fire Management Strategy and reserve bushfire management plans.
 - 2.4.2. The main drivers for the review include:
 - The existing City of Hobart Fire Management Strategy having been substantively implemented;
 - Many of the City's existing reserve bushfire management plans nearing the end of their useful life;
 - The need to align the City's priorities and programs with the outcomes from the *Greater Wellington Range Bushfire Mitigation Strategy*, currently in preparation by the Tasmania Fire Service; and
 - The changed bushfire management operational context resulting from the establishment of the TFS Fuel Reduction Unit.

- 2.4.3. The review is proposed to be initiated in 2018 and include replacement of the existing framework with a single, strategic and over-arching bushfire management policy encompassing all City-owned or managed bushland.
- 2.4.4. The new strategic fire management policy would be supported and operationalised by the development of map-based annual bushfire management operating plans which would prescribe annual fire management works programs, including fire trail and fuel break construction and maintenance, and planned burning.

2.5. **Bushland-Urban Interface Fuel Break Network**

- 2.5.1. An assessment of the City's bushland-urban interface fuel break network using new State Government guidelines and on-line calculator for the design and construction of fuel breaks has confirmed the majority of the City's network is adequate.
- 2.5.2. Some deficiencies have been identified where rectification work is required involving extensions to some existing breaks and construction of a number of new breaks.

The total area of fuel break improvement is approximately 10ha which represents an increase in the fuel break network of almost 30%.

- 2.5.3. Community and stakeholder response was generally positive to the construction of a number of pilot new and extended fuel breaks undertaken between March and June 2017.
- 2.5.4. It is proposed that the new guidelines be adopted as the City's standard with implementation of the identified network rectification works be progressively undertaken with commencement 2017/2018.

2.6. **Bushfire Hazard Reduction Program**

- 2.6.1. Ten planned hazard reduction burns, encompassing a total area of approximately 180ha, were conducted during 2016/2017.

Seven of the burns, with a combined area of 128ha, included City-owned or managed bushland.

- 2.6.2. A program of fifteen fuel reduction burns comprising all or part the City's bushland estate is currently planned for the spring and autumn seasons of 2017/2018.

Of the total planned area of approximately 317ha, 231ha is City bushland estate with the balance being private and State owned bushland.

3. Recommendation

That:

- 1. A formal review of the City's existing bushfire management strategic framework, including the City of Hobart Fire Management Strategy and all reserve bushfire management plans be undertaken in 2018/2019, overseen by an inter-divisional steering group.***
 - (i) The new strategic fire management policy would be supported and operationalised by the development of map-based annual bushfire management operating plans which would prescribe annual fire management works programs, including fire trail and fuel break construction and maintenance, and planned burning.***
 - (ii) The current draft Knocklofty, McRobies, Ridgeway and Waterworks Reserves Bushfire Management Plan not be separately finalised but be incorporated within the proposed new framework documents.***
- 2. The State Government's new Fuel Break Guidelines (2016) and on-line calculator be adopted as the City's standard for the design and construction of fuel breaks along the bushland-urban interface, except for new development sites where AS3959-2009 Construction of buildings in bushfire prone areas would apply.***
- 3. A fuel break improvement program be commenced in 2017/2018 to rectify deficiencies in the existing City bushland estate fuel break network in dry forest areas, identified by recent assessment using the new State Government guidelines and on-line calculator.***
 - (i) Community engagement be undertaken with owners of neighbouring properties to negotiate cooperative treatment of private property to complement fuel break improvement works undertaken on adjoining City bushland estate.***
- 4. City Officers consider further the application of the Fuel Break Guidelines in wet forest areas, which includes Fern Tree, including undertaking community engagement on the potential implementation of the guidelines, legal and risk implications for the City and the treatment of fuels on private land.***
- 5. The upgrade to the City's Fire Trail Network continue through 2017/2018.***
- 6. The completed 2016/2017 and planned 2017/2018 bushfire hazard reduction programs, summarised in Attachments D-G of the report, be noted.***

4. Background

4.1. Strategic Bushfire Management Framework

- 4.1.1. The City's bushfire management strategic framework requires review and renewal, including the existing fire management strategy and reserve bushfire management plans.

4.2. Bushfire Management Strategy

- 4.2.1. The City's existing Bushfire Management Strategic Framework comprises the City of Hobart Fire Management Strategy and five reserve bushfire management plans.

- 4.2.2. The Fire Management Strategy was adopted in 2014 with a planned life of 5 years, to 2019.

The Strategy is a 'high' level and 'cross-division' document which details the principles and a range of strategies to guide management of the City's bushfire risk.

- 4.2.3. Progress in implementing the Strategy was reported to the Council on 21 November 2016. It was noted that the majority of the Strategy's actions have been completed or are established and on-going.

It was resolved that a review of the Strategy be brought forward to 2018.

4.3. Reserve Bushfire Management Plans

- 4.3.1. Bushfire management field operations in the City are guided by reserve bushfire management plans (RBMP).

- 4.3.2. These plans detail fire management activities required to mitigate fire risks for protecting life and property, whilst avoiding or minimising adverse impact on biodiversity, cultural heritage and social values.

- 4.3.3. Currently five RBMPs are in place encompassing most, but not all, bushland owned or managed by the City; namely:

- *Ridgeway Park – Waterworks Reserves Fire management Plan (2003);*
- *Knocklofty Reserve McRobies Gully Fire Management Plan (2005);*
- *Wellington Park Fire Management Strategy (2006);*
- *Queens Domain Fire Management Plan (2008); and*
- *Bicentennial Park – Porter Hill Fire Management Plan (2014).*

- 4.3.4. Aside from a number of relatively small, linear bushland reserves (e.g. Haldane Reserve, Wellesley Park), the most significant bushland block not currently subject to a RBMP is the City's landholdings in the Barossa Catchment at Lenah Valley.

This area comprises approximately 112ha, the majority (82%) of which is situated within the Glenorchy local government area.

- 4.3.5. The existing reserve bushfire management plans have a planned life of 15 years and existing plans range in age from 3 to 14 years.
- 4.3.6. The two oldest plans, Ridgeway–Waterworks and Knocklofty-McRobies have recently been reviewed and a new draft consolidated plan prepared.

The Council resolved at its meeting of 21 November 2016 to defer consideration of public exhibition and finalisation of the new plan pending determination of the Council's position on adoption of the State Government's new *Fuel Break Guidelines: Guidelines for the design of fuel breaks in the urban-rural interface* (2016) and associated on-line calculator.

4.4. Tasmania Fire Service Preparing Bushfire Mitigation Strategy for Greater Wellington Range

- 4.4.1. A review of the *Wellington Park Fire Management Strategy* has recently been initiated by the Wellington Park Management Trust (WPMT).

This review has been paused pending the outcome of a collaborative bushfire mitigation planning project for the Greater Wellington Range initiated by the Tasmania Fire Service (TFS).

- 4.4.2. The TFS has engaged a contractor to prepare an over-arching, broad-scale bushfire risk mitigation strategy for the Greater Wellington Range, incorporating the eastern slopes and adjoining lands of kunanyi/Mt Wellington within Hobart and Glenorchy local government areas.

This strategy, in essence, will confirm at a strategic level, fire risk management priorities across all land tenures over the area, and provide a region-level strategic framework within which finer-scale, operational level detail planning of fire risk mitigation operations are conducted.

- 4.4.3. This project is being overseen by a steering committee comprising representation from TFS, WPMT, City of Hobart, Glenorchy City Council, and the Parks and Wildlife Service.

4.5. State Government Establishment of Fuel Reduction Unit

- 4.5.1. The operational context for bushfire management in the Hobart region has changed in the last two years with the State Government establishment of the Bushfire Fuel Reduction Unit within the TFS.

The Unit is focused on strategic bushfire risk mitigation across all land tenures in the state and has significantly increased the capacity to plan and conduct planned burning operations.

- 4.5.2. For Hobart, in collaboration with the City, this has meant more and larger burns being conducted and increased areas of private and other non-City bushland incorporated within planned burns.

4.6. The City's Bushfire Management Strategic Framework

- 4.6.1. As detailed in this report, a review of the City's Bushfire Management Framework will be undertaken in 2018. It is expected that this review will result in the replacement of the existing framework with a single, strategic and over-arching bushfire management policy encompassing all City-owned or managed bushland, including landholdings outside the local government boundary in Glenorchy and Kingborough.

- 4.6.2. The new strategic document will detail the City's rationale, policies, principals, and priorities underpinning bushfire management operations on the City's bushland estate.

It will include:

- Bushfire ignition source management;
- Construction and management of fire trails and fuel breaks;
- Fuel reduction by burning and mechanical means;
- Bushfire incident preparedness and response capability;
- Interagency cooperation;
- Fire operations staff competency levels;
- Fire resourcing (equipment and personnel) capacity; and
- Ecological monitoring and management.

- 4.6.3. The new strategic fire management policy would be supported and operationalised by the development of map-based annual bushfire management operating plans which would prescribe annual fire management works programs, including fire trail and fuel break construction and maintenance, and planned burning.

- 4.6.4. Each operating plan is to include all built, cultural (Aboriginal and historic) heritage and environmental (including management units, fire history, vegetation communities and significant biodiversity) attributes relevant to decision making for bushfire management field operations, and prescribe the annual works program (including fire trail and fuel break construction

and maintenance, and planned burning).

The data is to be maintained and annually updated on the corporate geographic information system and presented in large-scale map-based format.

- 4.6.5. The proposed framework is consistent with that used for the new draft *Knocklofty, McRobies, Ridgeway and Waterworks Reserves Bushfire Management Plan*.

Much of this draft document is suitable to be directly incorporated within the proposed new bushfire management strategic framework.

As such, this draft plan would not be required to be separately finalised but would be incorporated within the new framework documents.

- 4.6.6. All existing reserve fire management plans, excluding that for Wellington Park, would be replaced by the proposed new framework.
- 4.6.7. An inter-divisional steering group complemented by other specialist staff as necessary will be established to initiate and oversee the review process.

4.7. **Bushland-Urban Interface Fuel Break Network**

- 4.7.1. The bushland-urban interface (where houses adjoin bushland) is where the bushfire risk to life and property is greatest. These areas may encompass both private and public land.
- 4.7.2. The City has established fuel breaks (also known as fire breaks or asset protection zones), along the interface with City-owned or managed bushland.
- 4.7.3. Within the breaks, vegetation has been selectively removed, both horizontally and vertically, creating a buffer between houses and fire-prone vegetation where fuels are significantly reduced and maintained at very low levels.

They provide a degree of protection from bushfire and allow access for fire response and hazard reduction burning operations.

- 4.7.4. The City's existing network of fuel breaks has been created over several decades and based on the prevailing design principles and rule-of-thumb specifications.
- 4.7.5. New guidelines and an on-line calculator for the design of fuel breaks were publicly released by the State Government in late 2016.

- 4.7.6. The guidelines and design tool utilize a range of site attributes or variables on the bushland-urban interface to calculate the required design extent of each fuel break, which will vary from site to site.

Five site attributes are used to calculate the required minimum fuel break width, namely:

- The degree of fuel reduction (by burning or mechanical means) undertaken in vegetation neighbouring the interface – untreated adjoining vegetation is expected to produce more intense radiant heat in a bushfire.
- Vegetation type or vegetation community – differing vegetation communities have different fire spread, intensity and flammability characteristics that drive fire risk to bordering properties.
- Position of the property with respect to bushland – upslope, downslope or level.
- Slope angle of the land where the bushland is located downslope of properties – steeper slopes from the fire to the property drive faster fire spread and greater fire intensity.
- Maximum fire-run distance – distance of continuous vegetation in the direction from which a bushfire is likely to approach.

- 4.7.7. The City recently completed an assessment of its current bushland estate fuel break network using the new guidelines and calculator.

This largely desk-top process, using the corporate geographic information system coupled with strategic field assessment and verification, has confirmed that whilst much of the network is adequate, a number of existing fuel breaks require extension and the establishment of several new fuel breaks are necessary.

- 4.7.8. The University of Tasmania was engaged to provide independent advice on the assessment methodology used for the assessment process.

This helped in the early identification and rectification of a number of initial flaws in the on-line calculator, and contributed to a high confidence in the assessment results.

- 4.7.9. It is important to note that the City's bushland estate represents only approximately 75% of the bushland-urban interface.

About one quarter of the extent of the interface is with non-City bushland, primarily private property. This interface was not assessed as part of the current work.

- 4.7.10. The current preliminary estimate of the total area of identified new and extended fuel breaks required within the City's bushland estate is approximately 10ha.

This represents an almost 30% increase on the current total actual fuel break network area of some 35ha, and will increase the total network extent to approximately 46ha when fully established.

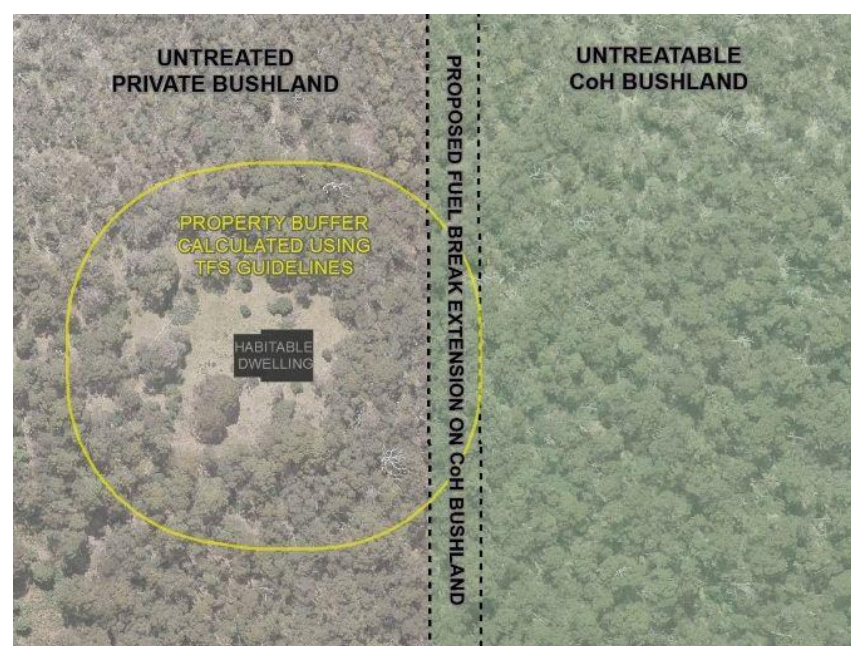
- 4.7.11. The assessment also confirmed that many of the private properties adjoining the sites where new or extensions to fuel breaks have been identified as required, contain significant levels of flammable vegetation.

If left untreated by property owners, the condition of the properties would compromise or entirely negate the protection benefits of the fuel break on the adjoining City bushland estate.

This is particularly the case for properties adjoining the wet sclerophyll vegetation communities, much of which occurs around the Fern Tree area.

This type of vegetation is generally unable to be treated by planned burning and as a consequence fuel breaks generally need to be wider so as to perform a more protective function.

(Refer diagram below)



- 4.7.12. All sites where fuel break improvement work is required have been assessed for significant flora, fauna and Aboriginal and historic heritage.

4.8. Piloting of New and Extension Fuel Breaks

- 4.8.1. The Council resolved, at its meeting of 21 November 2016, that the City construct a number of new and extended fuel breaks to enable assessment of the suitability of the new guidelines for Hobart.
- 4.8.2. Nine trial sites at Tolmans Hill, Mount Nelson and Lenah Valley, encompassing a total area of approximately 0.5ha were constructed in April-May 2017.

Photographs showing examples of the pilot site work are provided below:





- 4.8.3. Construction was preceded by distribution of written information to adjacent landowners and other key stakeholders, including relevant Bushcare groups.
- 4.8.4. Only minor response was generated by the notification and subsequent commencement of works, several of which resulted in on-site meetings with immediate neighbours requiring further clarification of the works.
- 4.8.5. To date, community and stakeholder response to the trial sites works has been positive. The very few initial concerns received were addressed by on-site discussions and further clarification of the purpose and extent of works.
- 4.9. **Adoption of Guidelines and Implementation of Fuel Break Network Improvement Works Program**
 - 4.9.1. The State Government's new *Fuel Break Guidelines (2016)* and on-line calculator have been comprehensively 'road-tested' and have been assessed to be suitable for adoption and use by the City.
 - 4.9.2. Application of the guidelines has confirmed that a modest expansion of the City's existing fuel break network is required (as detailed in section 4.7.10 of this report)
 - 4.9.3. The construction of several pilot sites exemplified the new and extensions to existing fuel breaks confirmed low community concern.
 - 4.9.4. It is proposed that the new fuel break guidelines and on-line calculator be adopted as the City's standard for the design and construction of fuel breaks along the bushland-urban interface, except for new development sites where *AS3959- 2009 Construction of buildings in bushfire prone areas* is to apply.
 - 4.9.5. If adopted, it is proposed to implement the required improvement works over the next several years, as funds permit, commencing in 2017/2018.

- 4.9.6. A program of works has been substantively developed and works contract and tender documentation is being finalised.
- 4.9.7. Environmental assessment of the sites has been completed and planning and environmental approvals requirements determined.
- 4.9.8. It is expected that most if not all sites will be exempt from planning approval.

Design of each proposed new and extended fuel break will incorporate the protection of any threatened species wherever possible and hence eliminate or minimise the requirement for a threatened species permit in accordance with the *Threatened Species Protection Regulation 2006*.

- 4.9.9. A number of sites include threatened native vegetation communities listed under Schedule 3A of the *Nature Conservation Act 2002*.

Again, the design of each of the fuel breaks will minimise disturbance to these communities and the approval of the Forest Practices Authority will be obtained in accordance with *Cl.4(h) of the Forest Practices Regulation 2007*.

- 4.9.10. A total area of approximately 10ha requires treatment across the City's bushland estate.

Works at each site will treat the vegetation to reduce the overall fuel hazard rating to low, and include removal of most understory and shrubs, selective lopping and removal of some canopy trees, and slashing ground cover vegetation to 100mm height.

Where feasible, works will also include providing or improving vehicle access for ongoing maintenance and future planned burning and suppression operations.

- 4.9.11. A map of the proposed new and extensions to fuel breaks is attached as **Attachment A**.

Attachments B and C show examples of some of the fuel break improvements at a larger scale and illustrate the differing break widths that characterise the wet and dry vegetation community types.

- 4.9.12. A community engagement process is proposed with owners of neighbouring properties containing significant areas of flammable vegetation, with the aim of negotiating cooperative treatment of the private property to complement the works on the adjoining City bushland estate.

4.10. Bushfire Hazard Reduction Program

- 4.10.1. Ten planned hazard reduction burns encompassing a total area of approximately 180ha were conducted during 2016/2017 of which 128ha included City-owned or managed bushland.
- 4.10.2. An additional four planned burns (unable to be completed due to weather constraints) will be carried over to 2017/2018.
- 4.10.3. A summary table and map of completed 2016/2017 program is attached (refer **Attachments D and E**).
- 4.10.4. A program of fifteen fuel reduction burns comprising all or part City bushland estate, is currently planned for the spring and autumn seasons of 2017/2018.

Of the total planned area of approximately 317ha, 231 ha is City bushland estate with the balance being private and State owned bushland.

- 4.10.5. A summary table and map of the proposed 2017/2018 program is attached as **Attachments F and G**.

4.11. Fire Trail Network

- 4.11.1. The 2016/2017 Fire Trail Upgrade Program resulted in 13 fire trails (comprising 4,030m) being upgraded to new specifications.
- 4.11.2. The Fire Trail Upgrade program will continue into 2017/2018.

4.12. Draft Inter Agency Agreement with the TFS

- 4.12.1. A draft Inter Agency Agreement has been provided by City officers to the TFS covering the planning, approval process and operational delivery of the City's Hazard Reduction Burn Program. A meeting has been arranged with TFS representatives to progress the finalisation of the agreement.

5. Proposal and Implementation

- 5.1. Proposal and implementation for the three items subject of this report are addressed in the previous section.

6. Strategic Planning and Policy Considerations

- 6.1. The items relate to Capital City Strategic Plan 2015-2025 Strategic Objectives 3.2.1, 3.3.3 and 5.2.1.

Develop, implement and review fire management plans and associated programs for bushland reserves

Develop policies, strategies and standards to guide future management and development of the open space network

Manage bushfire risk through the implementation of the Hobart Fire Management Strategy

7. Financial Implications

7.1. Funding Source and Impact on Current Year Operating Result

7.1.1. Funding is included in the City's Fire and Biodiversity program budget proposal for 2017/2018.

7.1.2. The 2016/2017 operational costs, in line with budgeted provisions, was \$1.47M with capital expenditure an additional \$449,000.

7.2. Impact on Future Years' Financial Result

7.2.1. All items will require specific budget allocation in 2018/2019 and will be considered in the annual budget preparation process.

8. Legal, Risk and Legislative Considerations

8.1. The risk of bushfire is recognised as a significant risk in the City's Strategic Risk Register and is resourced accordingly.

8.2. The City has specific management obligations under the *Fire Services Act 1979*, specifically:

- S.49: Fire hazards;
- S.56: Firebreak formation;
- S.63: Restrictions on fire lighting; and
- S.64: Duties of occupiers of land.

8.3. The City has fire management obligations under the *Local Government Act 1993*, specifically:

- S.200: *The control of any 'nuisance' where nuisance is regarded as being '... causes or is likely to cause danger or harm to the health, safety or welfare of any person.'*

8.4. The City has a Common Law responsibility to provide for the protection of residents arising from natural hazards within its reserves.

8.5. The intent of all items in this report has a common aim to reduce the City's fire risk exposures as a land manager.

8.6. New and updated policy, plans and guidelines, aimed at fire risk mitigation, demonstrates the City's commitment to improved bushfire risk management.

9. Environmental Considerations

9.1. Works and considerations associated with bushfire protection, where relevant, have already, or will be, preceded by appropriate environmental impact assessment and incorporate relevant safeguards and will not proceed without all required planning and environmental approvals.

10. Community and Stakeholder Engagement

- 10.1. All items include engagement with the community and stakeholders and as such the final plan, design and outcome is more likely to be accepted and supported by the community.
- 10.2. Adoption of new State Government guidelines for fuel breaks and program of works to rectify defects in City's fuel break network will require preparation and implementation of a comprehensive community engagement strategy, specifically targeting and focusing on owners of properties immediately adjoining the City's bushland estate where new and extensions to existing fuel breaks have been identified.

11. Delegation

- 11.1. The matter is delegated to the Council.

As signatory to this report, I certify that, pursuant to Section 55(1) of the Local Government Act 1993, I hold no interest, as referred to in Section 49 of the Local Government Act 1993, in matters contained in this report.



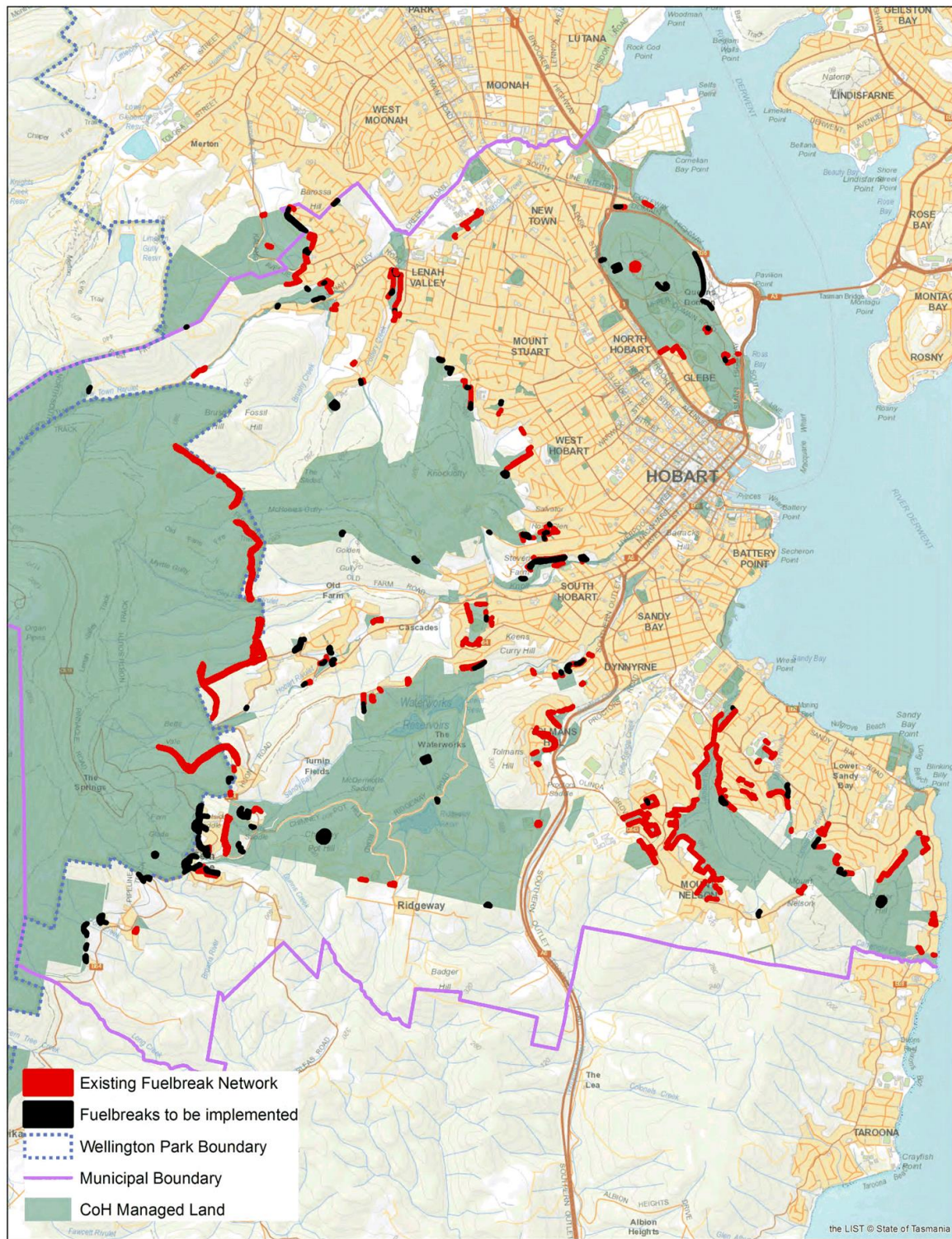
Bree Hunter
**(ACTING) TEAM LEADER FIRE AND
BIODIVERSITY**



Robert Mather
**(ACTING) DIRECTOR PARKS AND
CITY AMENITY**

Date: 4 August 2017
File Reference: F17/93823

Attachment A: Map of Fuelbreak Locations ↴
Attachment B: Map of Fuelbreaks - Wet Vegetation Type ↴
Attachment C: Map of Fuelbreaks - Dry Vegetation Type ↴
Attachment D: Completed Program 2016/2017 ↴
Attachment E: Map of Completed Program 2016/2017 ↴
Attachment F: Planned Program 2017/2018 ↴
Attachment G: Map of Planned Program 2017/2018 ↴



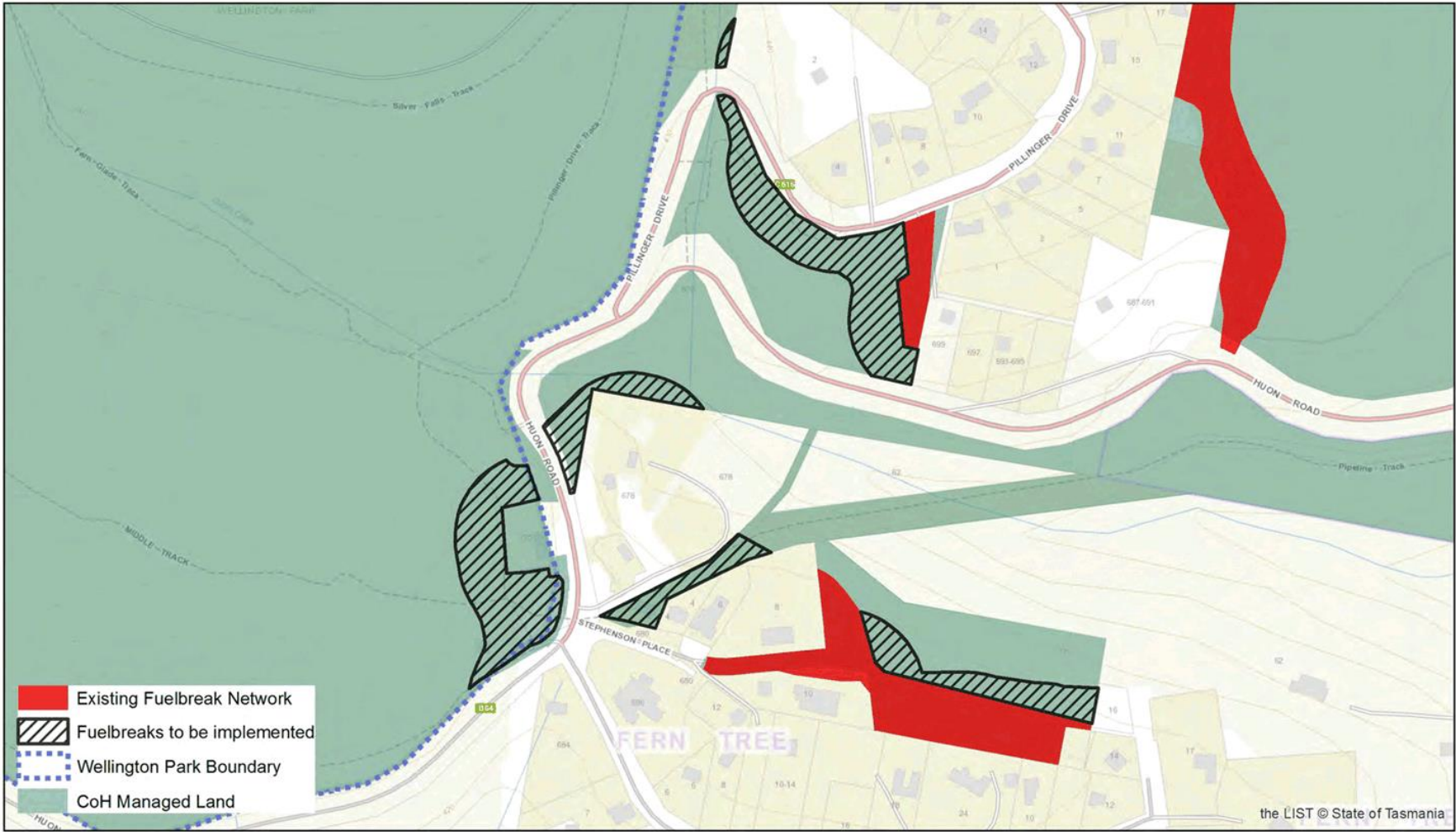
City of Hobart Fuelbreak Locations

NOTE: This map indicates location, not size, of fuelbreaks



0 250 500 1,000
Metres

A3 Print Size
Map Author: M. Gent
Print Date: 23-06-2017

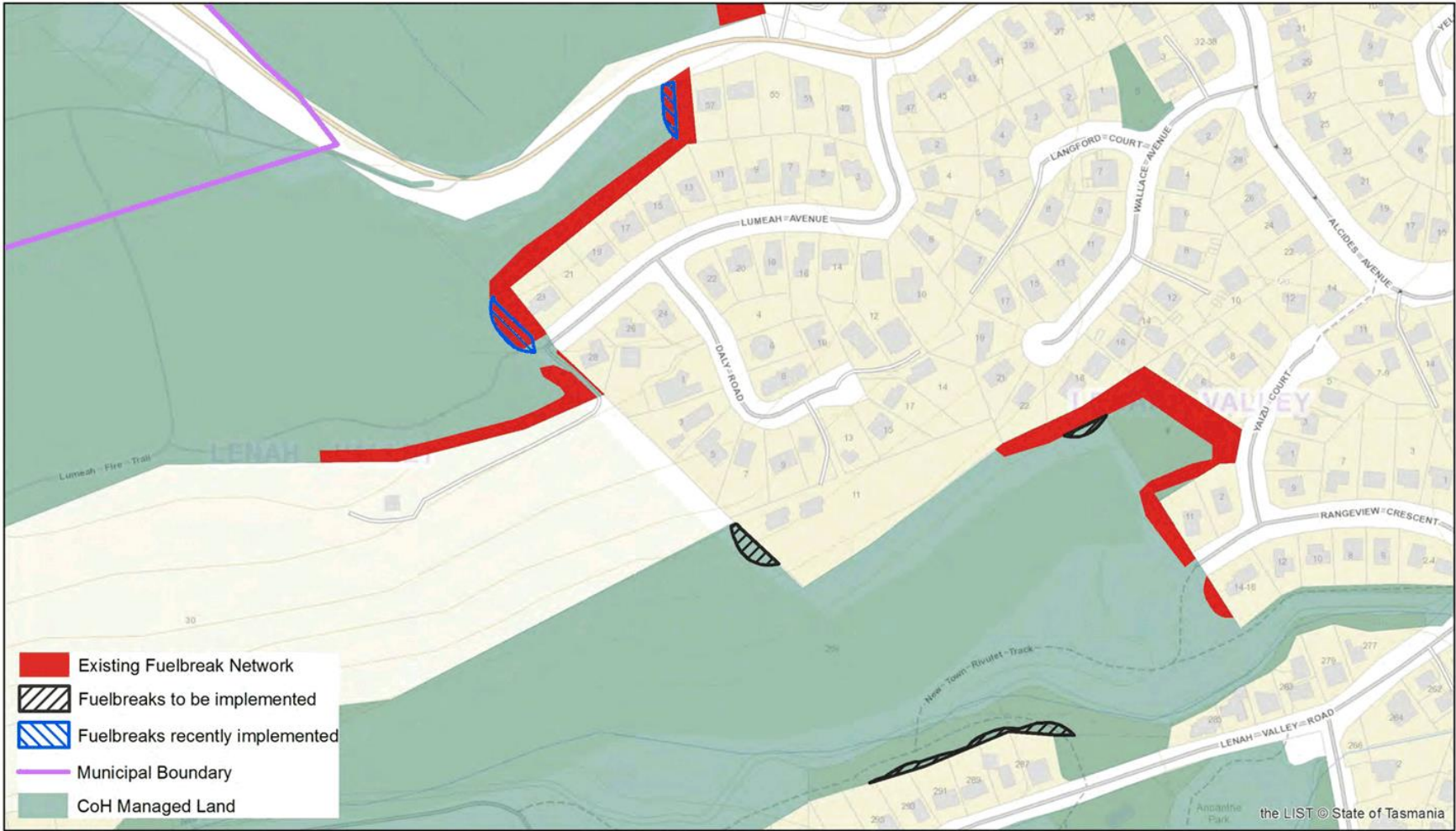


City of Hobart Fuelbreaks - Wet Vegetation Type



0 50 100 Metres

A4 Print Size
Map Author: M.Gent
Print Date: 23-06-2017



City of Hobart Fuelbreaks - Dry Vegetation Type



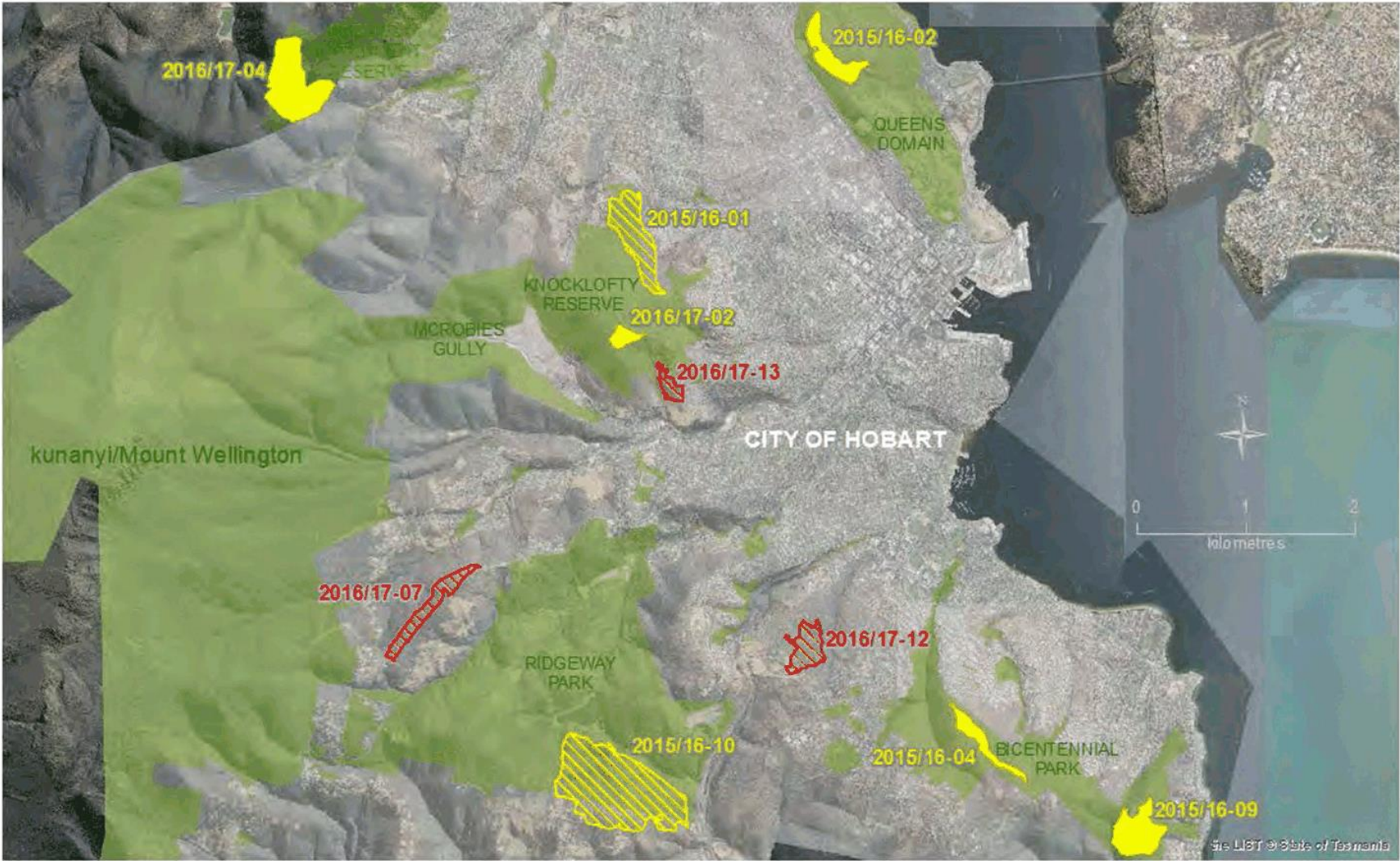
0 50 100
Metres

A4 Print Size
Map Author: M.Gent
Print Date: 23-06-2017

Completed Hobart 2016/17 Bushfire Hazard Reduction Program

No.	Name	Reserve	Suburb	HRB ID	Area (CoH)	Area (Other)	Total Area	Lead Agency	Support Agency	Season	Completed	Area completed
1	East Knocklofty	Knocklofty Reserve ¹	Mt Stuart	2015/16-01	13.3	5.7	19.0	TFS	HCC	Spring 16	29-Aug-16	19.0
2	Enterprise Road	Bicentennial Park ¹	Sandy Bay	2015/16-04	7.0	0.0	7.0	CoH	HCC	Spring 16	27-Sep-16	7.0
3	Ridgeway	Ridgeway Park ¹	Ridgeway	2015/16-10	50.4	16.2	66.5	TFS	HCC	Spring 16	28-Oct-16	66.5
4	Olinda Grove (UTAS)	Other tenure	Mt Nelson	2016/17-12	0.0	10.4	10.4	TFS	TFS	Autumn 17	03-Apr-17	10.4
5	Barossa Catchment	Wellington Park / Barossa Catchment	West Moonah	2016/17-04	29.1	0.4	29.5	CoH	TFS	Autumn 17	03-Apr-17	29.5
6	West Knocklofty	Knocklofty Reserve	West Hobart	2016/17-02	56.8	2.8	59.6	CoH	TFS	Autumn 17	06-Apr-17	4 (part)
7	Knocklofty private property	Other tenure	West Hobart	2016/17-13	0.0	4.0	4.0	TFS		Autumn 17	08-Apr-17	4.0
8	Huon Road	Other tenure	South Hobart	2016/17-07	0.0	11.4	11.4	TFS	Nil	Autumn 17	08-Apr-17	11.4
9	Dorney West	Bicentennial Park ¹	Lower Sandy Bay	2015/16-09	16.7	0.0	16.7	CoH	TFS/PW S	Autumn 17	20-Apr-17	16.7
10	Queens Domain Stage I	Queens Domain ¹	Queens Domain	2015/16-02	13.4	0.0	13.4	CoH	TFS	Autumn 17	04-May-17	10 (part)
TOTAL AREA (ha)					186.7	50.9	237.5					178.5
CoH Completed												67.2
TFS completed												111.3

¹ = Carry-over from 2015/16 Program






- CoH Program
- CoH supported by TFS/PWS
- TFS Program

2016/17 Completed Planned Burn Program

Planned Hobart 2017/18 Bushfire Hazard Reduction Program

No.	Name	Reserve	Suburb	HRB ID	Area (CoH)	Area (Other)	Total Area	Lead Agency	Planned Season	Status
1	Dorney East	Bicentennial Park	Lower Sandy Bay	2016/17-01	2.8	0	2.8	CoH	Spring 17	New
2	Rialannah	Bicentennial Park	Mt Nelson	2017/18-03	0.81	0	0.81	CoH	Spring 17	New
3	Waymouth	Bicentennial Park	Sandy Bay	2017/18-04	2.1	0	2.1	CoH	Spring 17	New
4	Lambert Rivulet	Bicentennial Park	Sandy Bay/Mt Nelson	2018/19-02	1.9	0	1.9	CoH	Spring 17	New
5	Knocklofty West	Knocklofty Reserve	West Hobart	2016/17-02	59	3	62	CoH	Autumn 18	Carryover from 2016/17
6	Queens Domain Stage I	Queens Domain Stage I	New Town	2015/16-02	3.4	0	3.4	CoH	Autumn 18	Part carry over from 2016/17
7	Queens Domain Stage II	Queens Domain Stage II	New Town	2016/17-03	4.59	0	4.59	CoH	Autumn 18	Carryover from 2016/17
8	QD grassland	Queens Domain	New Town	2017/18-05	8.31	0	8.31	CoH	Autumn 18	New
9	McRobies	McRobies	South Hobart	2017/18-02	15.5	0.6	16.1	CoH	Autumn 18	New
10	QD North	Queens Domain	New Town	2017/18-01	17.78	0	17.78	CoH	Autumn 18	New
11	QD Mechanical	Queens Domain	Glebe	2017/18-06	11.38	0	11.38	CoH	Autumn 18	New
12	Pottery Road	McRobies/Wellington Park (mainly off park)	Lenah Valley	2016/17-10	3.5	66.5	71.3	TFS	Spring 17	Carryover from 2016/17
13	Breakneck Stage 2	Wellington Park	Lenah Valley	2015/16-03b	57	0	57	TFS	Spring 17	Carryover from 2016/17
14	Chimney Pot Hill	Ridgeway Park	Ridgeway	2016/17-05	38.4	0	38.4	TFS	Autumn 18	Carryover from 2016/17
15	Hobart College South	Bicentennial Park (part)	Mt Nelson	2016/17-09	5	14.1	19.1	PWS	Autumn 18	Carryover from 2016/17
TOTAL AREA (ha)					231.5	84.2	317.0			
CoH Managed					131.17					
TFS/PWS Managed					185.8					



-  CoH Program
-  CoH supported by TFS/PWS
-  TFS Program

Proposed Planned Burn Program 2017/18

7 COMMITTEE ACTION STATUS REPORT

7.1 Committee Actions - Status Report

A report indicating the status of current decisions is attached for the information of Aldermen.

RECOMMENDATION

That the information be received and noted.

Delegation: Committee

Attachment A: Committee Status Action Report

PARKS AND RECREATION COMMITTEE - STATUS REPORT

OPEN PORTION OF THE MEETING

November 2014 to July 2017

Ref.	Detail	Report / Action	Action Officer	Comments
1	HARRINGTON STREET PUBLIC TOILETS – PROPOSED DECOMMISSIONING AND REMOVAL – FILE REF: 17-20-4 Open Council 25/5/2015, Item 15	<p>The Harrington Street public toilets be immediately decommissioned and a communication strategy, including signage, be developed to direct users to facilities located in the nearby Centrepoint Shopping Centre.</p> <p>The General Manager be authorised to proceed with the demolition of the Harrington Street public toilets and replacement with an appropriately designed wall, subject to:-</p> <p>(i) a further report being provided detailing the proposed replacement wall, including opportunities for the creation of a public space, opportunities for public art, interpretation of the historical bridge and increased visual access to the Hobart Rivulet.</p>	Director Parks and City Amenity	<p>The toilet block has been demolished, with the slab currently still in place.</p> <p>Investigations are progressing in respect to the further report on the future of the site.</p>
2	ANCANTHE PARK MASTER PLAN – IMPLEMENTATION – FILE REF: 70-31-1 Open Council 26/10/2015, item 16	<p>The staged implementation plan for the Ancanthe Park Master Plan, including the preliminary cost estimate, be approved.</p> <p>(i) Stage 1 works, estimated at a cost of \$15,000 be funded from the Bushland Strategy & Projects Function within the 2015/2016 Annual Plan.</p> <p>(ii) The proposed replacement of the public toilets, estimated at a cost of \$250,000, be funded as part of the Public Toilet Strategy program in 2016/2017.</p> <p>(iii) The balance of the works, estimated at a cost of \$385,000 be considered for funding in the 2016/2017 financial year.</p>	Director Parks and City Amenity	<p>Building works on site are substantially complete with final landscaping being undertaken.</p>

Ref.	Detail	Report / Action	Action Officer	Comments
3	<p>LEASE RENEWAL REQUESTS — HOBART FOOTBALL CLUB – PAKANA SERVICES – FILE REFS: 72-44-1; 72-25-19; 41-61-1</p> <p>Open PRC 12/11/2015, item 12</p> <p>Open FC 17/11/2015, item 7</p>	<p>The following lease renewals be approved:</p> <p>(i) A new five (5) year lease with the Hobart Football Club for the clubroom and changeroom facilities at the TCA Ground at a nominal rental of \$50 per annum.</p> <p>(ii) A new one (1) year lease agreement, with two (2) further one (1) year extensions, with Pakana Services for the shed located at Waterworks Reserves, South Hobart at a nominal rental of \$50 per annum.</p>	Director Parks and City Amenity	<p>Revised draft lease back with Club.</p> <p>Lease for shed at Waterworks Reserve complete.</p>
4	<p>QUEENS DOMAIN JOGGERS LOOP CONCEPT PLAN – FILE REF: 15/107-003</p> <p>Open Council 25/1/2016, item 13</p> <p>Open Council 23/5/2016, Item 17</p>	<p>The Queens Domain Joggers Loop Concept Plan, be approved.</p> <p>Stage 1, to include works focused around connectivity, supporting infrastructure (e.g. car park upgrade, signage, and traffic calming), and trialling the soft-fall surface, be undertaken in 2016/2017 at an estimated cost of \$250,000 be funded from the Bushland and Reserves Function Capital Works budget.</p> <p>Maintenance costs estimated at \$5,000 per annum be considered for inclusion in the 2017/2018 Bushland and Reserves Function.</p> <p>Nominations be sought for the renaming of the Joggers Loop track, in accordance with the Council policy 'Naming of Public Facilities, Parks or Reserves' with a view to renaming the track upon completion of Stage 1 works.</p>	Director Parks and City Amenity	<p>Stage 1 works are progressing.</p> <p>The matter of naming the track is listed below.</p>

Ref.	Detail	Report / Action	Action Officer	Comments
5	SOLDIERS MEMORIAL AVENUE – MANAGEMENT PLAN REVIEW – FILE REF: 14-50-5 Open Council 25/1/2016, item 13 Open Council 23/5/2016, item 18	A review of the Soldiers Memorial Avenue Management Plan 2004 be undertaken with the development of a new management plan, at an estimated cost \$15,000 to be funded from the Open Space Planning Function in the 2017/2018 Annual Plan. (i) The management plan consider the utilisation of the 'Tree Widows' material for the interpretation and promotion of the Soldiers Memorial Avenue. The Friends of Soldiers Memorial Avenue be advised of the Council's decision.	Director Parks and City Amenity	Review of the Management Plan is to be undertaken in 2017/18.
6	BATTERY POINT SHARED ACCESSWAY – FILE REF: 37-2-2 Open Council 25/1/2016, item 17	That a report be prepared that details options available as a means of facilitating movement in and around Battery Point and its foreshore, and addresses the following: 1. The implementation, in the short term, of the formalisation of an existing road route through Battery Point. 2. Analysis of the options include detail on the following: (i) estimated financial implications; (ii) planning and legal implications; and (iii) how the proposal relates to the City of Hobart Strategic Plan 2015-2025. 3. Analysis of any opportunity costs in respect to proceeding or not proceeding with a shared access way, including its impact with other planned projects. 4. Details on engaging the local and wider community in respect to the options.	Director City Planning	An in-house team is being assembled to respond to the Council later this calendar year.

Ref.	Detail	Report / Action	Action Officer	Comments
7	<p>BUSHFIRE MANAGEMENT PLAN – FILE REF: 70-30-1</p> <p>Open Council 22/2/2016, item 15</p> <p>Open Council 21/11/2016, Open PRC 13/7/2017</p>	<p>The progress in implementing the Bushfire Management Strategy 2014 be noted and a formal review of the Strategy be undertaken in the 2018 calendar year.</p> <p>The completed 2015/2016, planned 2016/2017 and rolling 3-year (2016/2017 – 2018/2019) bushfire hazard reduction programs, be noted.</p> <p>Upon release of the new State Government Guideline for design and construction of firebreaks, a number of trial demonstration fire breaks, utilising the guidelines, be constructed to enable an assessment of their suitability to be undertaken.</p> <p>(i) The General Manager be delegated authority to approve the selection and construction of trial demonstration firebreaks utilising the new guidelines within the City's bushland reserve system.</p> <p>Consideration associated with the review of the draft bushfire management plans for Knocklofty, McRobies, Ridgeway and Waterworks Reserves be deferred until the Council determines its position on the adoption of the State Government Fire Break Guidelines.</p> <p>Hazard reduction burning and the fire trail enhancement program and maintenance activities, in accordance with the preliminary draft bushfire management plans, be progressed.</p> <p>An appropriate joint media release be issued by the Lord Mayor together with the Chairman of the Parks and Recreation Committee at the appropriate time.</p>	Director Parks and City Amenity	A report on the matter is attached to the report.

Ref.	Detail	Report / Action	Action Officer	Comments
8	PROPOSED PERGOLA INSTALLATION – FITZROY GARDENS – FILE REF: 70-20-1 Open Council 26/4/2016, item 18	<p>Landlord approval be granted for the relocation of the pergola, formerly located at the Macquarie Street entrance to Franklin Square, Fitzroy Gardens.</p> <p>The General Manager be authorised to lodge a development application for the works.</p> <p>An allocation of \$25,000 be provided from the Parks Infrastructure Asset Replacement budget for the 2016/2017 financial year to allow the project to proceed.</p>	Director Parks and City Amenity	A development application for the works has been lodged.
9	1 FOLDER STREET AND 5 TEW TERRACE, SANDY BAY – PROPOSED LAND EXCHANGE –FILE REFS: 5613607; P/1/497 Open Council 23/5/2016, item 20	<p>The Council proceed, pursuant to Section 178 of the Local Government Act 1993, with the exchange of approximately 460m² of land situated at 1 Folder Street, Sandy Bay with an equivalent parcel located in the City's Bicentennial Park, at 5 Tew Terrace, Sandy Bay.</p> <p>(i) The single objection received during the statutory advertising period as part of the public land disposal process, pursuant to Section 178 of the Local Government Act 1993, be considered to not present a strong rationale for the land exchange not to proceed.</p> <p>(ii) The objector be advised of the Council's decision, in accordance with the requirement of Section 178 of the Act.</p> <p>The Council provide landowner consent to lodge a Section 43A (a combined planning scheme amendment and development application) to progress the land exchange.</p>	Director Parks and City Amenity	<p>The Council approved the Section 43A application at its meeting held on 19 December 2016.</p> <p>The application now rests with the Tasmania Planning Commission for determination.</p>

Ref.	Detail	Report / Action	Action Officer	Comments
10	<p>DUAL COMMERCIAL PROPOSALS FOR A 'ROPES COURSE FACILITY' ON COUNCIL PARKLAND – FILE REF: 41-61-1</p> <p>Open Council 23/5/2016, item 21</p>	<p>The City of Hobart undertake an expression of interest process for the operation of a high ropes course facility within the City's parkland.</p> <p>The expression of interest require proponents to:</p> <ul style="list-style-type: none"> (i) identify a suitable site and relevant surrounding impacts; (ii) be prepared to negotiate a commercial lease for the area; (iii) provide a business case; (iv) ensure the concept can meet the objectives of the planning scheme; (v) demonstrate the ability to meet the required capital and recurrent costs; (vi) comply with all other Council requirements; and (vii) demonstrate excellence in environmental practices. <p>The General Manager be delegated the authority to prepare and release an expression of interest.</p> <p>A further report be provided to advise the outcomes of the expression of interest process.</p>	Director Parks and City Amenity	<p>The EOI process has closed.</p> <p>Negotiations are progressing with the preferred operator.</p> <p>A report will be provided in coming months.</p>
11	<p>LOCHNER STREET, WEST HOBART - STREET TREES PROPOSAL – FILE REF: 42-1-50</p> <p>Open PRC 9/6/2016, item 10</p>	<p>That the Council proceed with the proposal to plant two new street trees in Lochner Street, outside 24 Lochner Street, West Hobart during the proposed street works in the 2016/17 financial year, at an approximate cost of \$6,000 to be funded from the Parks Infrastructure Asset Replacement budget in the 2016/17 Annual Plan.</p> <p>The Council not proceed with planting street trees outside 18, 20, 22 Lochner Street due to the high cost of relocating the TasWater sewer main, required to accommodate any street trees in that location.</p> <ul style="list-style-type: none"> (i) Alternatively, consideration be given to planting small, drought tolerant, low maintenance plant species such as Lavender and Rosemary with appropriate material in place to contain the root ball. 	Director Parks and City Amenity	<p>Road works are complete with landscaping to be undertaken when weather conditions are appropriate, in the next month or so.</p>

Ref.	Detail	Report / Action	Action Officer	Comments
12	Request for Memorial Plaque - Former Aldermen Bruce O'Connor - Long Beach Reserve, Lower Sandy Bay Open PRC 11/8/2016, item 6.3	<p>That the request to install a memorial plaque on a seat within the Long Beach Reserve area, Sandy Bay, recognising former Alderman Bruce O'Connor's service to the City, be approved.</p> <p>In accordance with the Council's policy titled Memorial Plaques and Tree Plantings in Parks, Bushland and Reserves, the final location of the plaque be to the satisfaction of the Director Parks and City Amenity.</p> <p>The cost of the plaque be funded by the O'Connor family.</p> <p>The O'Connor family be advised of the decision.</p>	Director Parks and City Amenity	The proponent has been advised of the Committee's decision with the City awaiting further progress from the family.
13	Fern Tree Park Visitor Node Master Plan, Wellington Park - Results of Community Engagement and Endorsement of Final Master Plan Open Council 24/10/2016, item 12 Open Council 22/5/2017, item 18	<p>The Fern Tree Park Visitor Node Master Plan – Wellington Park be endorsed.</p> <p>Staged implementation of the master plan be undertaken in accordance with the City's 10 year Capital Works Program allocations of \$750,000 in 2017/2018 and \$250,000 in 2018/2019.</p> <p>External funding sources be pursued for the estimated \$100,000 of road and traffic works.</p> <p>Respondents to the public exhibition of the master plan, including the operator of the Fern Tree Tavern, be notified of the Council's resolution and the key amendments to the plans.</p> <p>(i) The Council request the Department of State Growth to reduce the speed limit on Huon Road, in the vicinity of the Tavern, to 40 km/h.</p> <p>The General Manager be authorised to lodge development applications, as required, to enable implementation of the approved master plan to be progressed.</p> <p>The Wellington Park Management Trust be advised of the Council's decision.</p>	Director Parks and City Amenity	<p>The Trust and respondents to the public exhibition have been advised of the Council decision.</p> <p>Further detail design and planning to implement the Master Plan is underway with construction budgeted for 2018/19.</p>

Ref.	Detail	Report / Action	Action Officer	Comments
14	Request for Extension of Lease - Telstra Telecommunication Tower - Sandown Park, Sandy Bay Open Council 19/12/2016 item 20 Open Council 24/4/2017, item 25	<p>That the Council approve a new lease to Telstra for the site of the telecommunications tower located at Sandown Park, Sandy Bay for a ten (10) year period with two (2) further five (5) year options.</p> <p>The General Manager be authorised to negotiate the terms of the new lease agreement.</p>	Director Parks and City Amenity	A lease is being prepared.
15	Draft City of Hobart Street Tree Strategy - Endorsement for Community Engagement Open PRC 8/12/2016, item 6.5 Open Council 16, 20/2/2017 Open Council 24/7/2017, item 27	<p>That the City of Hobart Street Tree Strategy 2017, as attached to the report, be approved for implementation.</p> <p>The existing annual allocation of \$40,000 to resource the supply of street tree plantings be increased to \$100,000 annually and be funded from the Parks and City Amenities divisional budget.</p> <p>An annual allocation of \$20,000 be provided for three years (2017/2018 to 2019/2020) to resource the development of new policies and procedures to support the implementation of the Strategy, to be funded from the Parks and City Amenities divisional budget.</p> <p>Respondents to the public exhibition of the Street Tree Strategy be notified where possible of Council's approval of the Strategy.</p>	Director Parks and City Amenity	The Council decision is being actioned.

Ref.	Detail	Report / Action	Action Officer	Comments
16	Doone Kennedy Hobart Aquatic Centre Redevelopment Master Plan - Results of Community Engagement and Endorsement of Final Master Plan Open Council 20/2/2017, item 4 Open Council 22/5/2017, item 17	<p>The Doone Kennedy Hobart Aquatic Centre Redevelopment Master Plan, dated May 2017 be approved.</p> <p>Implementation of the Master Plan be undertaken in accordance with the City's 10 Year Capital Works Program and receipt of grant funding.</p> <p>Respondents to the public exhibition of the master plan be notified of the Council's resolution and key refinements to the plan.</p> <p>The General Manager be authorised to lodge development applications to enable implementation of the approved master plan.</p>	Director Parks and City Amenity	<p>Detailed plan development is now underway.</p> <p>Preparations are being made for the lodgement of a development application for this project.</p> <p>Notification from the Australian Government on whether the City has been successful in obtaining a \$10M grant is awaited.</p>
17	Notice of Motion - Memorial Plaques on Council Outdoor Furniture Open Council 20/3/2017, item 7.1	<p>That a report be provided to review Council's current policy on plaques secured / affixed to infrastructure.</p>	Director Parks and City Amenity	<p>A report is being prepared for the September meeting.</p>

Ref.	Detail	Report / Action	Action Officer	Comments
18	<p>Queens Domain Advisory Committee - Proposed Amendment to Function and Membership</p> <p>Open Council 24/4/2017, item 24</p>	<p>That the Queens Domain Advisory Committee be renamed the Queens Domain Network.</p> <p>The function and membership of Queens Domain Network be amended from a limited membership, advisory committee, to a broader stakeholder reference and networking group.</p> <p>A forum of the Network stakeholders be held at least biannually, to discuss current issues and consider longer term proposals under consideration and/or brief on activities/changes recently introduced.</p> <p>Stakeholders of the Network be as recommended in the Officer's report.</p> <p>An open process of nomination from relevant groups be undertaken to ensure stakeholders are given an opportunity to participate in the forum.</p> <p>A review of the Network's operation, function and terms of reference be undertaken after 12 months of operation.</p>	Director Parks and City Amenity	<p>The Council decision is being actioned.</p> <p>Calls for nominations of representatives of the Network closed end of July.</p>
19	<p>The Springs, kunanyi / Mount Wellington - Potential Visitor Centre - Pre-Feasibility</p> <p>Open Council 22/5/2017, item 19</p>	<p>The Council commission a feasibility study into a City-funded visitor centre at The Springs, kunanyi / Mount Wellington, at an estimated cost of up to \$75,000, with the study to include market analysis, concept development, infrastructure planning and design and the investigation of business model options for ownership, management and operations.</p> <p>(i) The cost of the study be funded from the Bushland and Reserves Capital Works Program.</p> <p>The Council write to the Wellington Park Management Trust requesting that the Trust schedule the proposed revision of The Springs Master Plan to commence after the Council considers the findings of the feasibility study.</p> <p>A further report be provided upon receipt and review of the feasibility study.</p>	Director Parks and City Amenity	<p>A brief is being finalised to engage a consultant to undertake the feasibility study.</p> <p>The Council's request to the Trust has been forwarded and a reply awaited.</p>

Ref.	Detail	Report / Action	Action Officer	Comments
20	<p>Proposed Extension of the Intercity Cycleway - Regatta Grounds through Macquarie Point to Evans Street</p> <p>Open Council 22/5/2017, item 20</p> <p>Open Council 24/7/2017, item 29</p>	<p>That the City work in partnership with the Macquarie Point Development Corporation to enable the construction of the extension of the Intercity Cycleway, from McVilly Drive, Hobart Regatta Grounds, through Macquarie Point to Evans Street and include any bicycle infrastructure work that may be required into traffic flows with all sections being built concurrently.</p> <p>The City's financial contribution of an estimated \$400,000 to construct approximately 400m of the cycleway from McVilly Drive to the boundary of the Macquarie Point development site, be approved.</p> <p>The approval be provided on the condition that the Macquarie Point Development Corporation fund construction of the cycleway through its site to Evans Street (approximately 600 metres).</p> <p>The General Manager be authorised to progress all required negotiations with the Macquarie Point Development Corporation and to lodge development applications for the works, as may be required.</p> <p>Design of the final alignment and detail of the cycleway be undertaken in consultation with relevant stakeholders, to the satisfaction of the Hobart Bicycle Advisory Committee.</p> <p>Should there be variation in the cost of the build, by 20 per cent or more, the project must be referred back to Committee.</p> <p>A joint media release be issued together with the Macquarie Point Development Corporation at the appropriate time.</p>	Director Parks and City Amenity	The Council decision is being actioned.

Ref.	Detail	Report / Action	Action Officer	Comments
21	<p>Petition – Park at corner of Firth Road and Girrabong Road, Lenah Valley</p> <p>Open Council 22/5/2017, item 6.1</p> <p>Open Council 24/7/2017, item 26</p>	<p>That the matters raised in the petition relating to the management and use of the Park located on the corner of Firth and Girrabong Road in Lenah Valley be noted.</p> <p>Fencing at the Park remain in place.</p> <p>Investigations be undertaken to determine the need, cost and practicality of closing gaps under the fences in the Park.</p> <p>Formalisation of the Park as an 'off lead' dog exercise area be further considered as a component of the next review of the City's Dog Management Plan after the opening of the John Turnbull Park fenced, dog exercise area.</p> <p>The Petitioners be notified of the Council's decision.</p>	Director Parks and City Amenity	The Council decision is being actioned.
22	<p>Moss Beds Road, Mountain River (Wellington Park) - Proposed Licence Agreement</p> <p>Open Council 19/6/2017, item 17</p>	<p>That the General Manager be authorised to negotiate the terms and conditions of a licence agreement with the owner of Lot 198000/1 (PID 5691592) at Moss Beds Road, Mountain River (a land locked portion of private land within Wellington Park) to formalise access along an established access road within Wellington Park, on land vested to the City of Hobart.</p> <p>(i) Licence conditions include:</p> <p style="padding-left: 40px;">(a) Provision for owner responsibility specifying the form, size, condition, and maintenance of the access road.</p> <p style="padding-left: 40px;">(b) A review of the licence upon any future sale of the property.</p> <p style="padding-left: 40px;">(c) A weed management plan be developed.</p> <p>The quantum of the annual licence fee be determined by a registered valuer.</p> <p>The landowner be responsible for all costs associated with the licence agreement.</p>	Director Parks and City Amenity	The licence is being prepared.

Ref.	Detail	Report / Action	Action Officer	Comments
23	Sandown Park, Sandy Bay - Proposed Optus Infrastructure - Lease of Public Land Open Council 24/7/2017, item 23	<p>That the City initiate community consultation, pursuant to Section 178 of the Local Government Act 1993, in response to a request from Optus for lease over a small parcel of land (2m x 4.5m) at Sandown Park, Sandy Bay in order to locate telecommunications cabinets immediately adjacent to the existing Telstra telecommunications pole.</p> <p>Upon conclusion of the community engagement process, a further report be provided on the merit and terms of a proposed new lease for the site.</p>	Director Parks and City Amenity	The Council decision is being actioned.
24	Wellesley Park Pavilion, South Hobart - Lease Termination and Renewal Open Council 24/7/2017, item 24	<p>That the South Hobart Football Club's current lease, over part of the Wellesley Park Pavilion, South Hobart, be rescinded, subject to the provision of a new lease.</p> <p>The General Manager be authorised to finalise terms and conditions with the South Hobart Football Club to lease parts of the Wellesley Park Pavilion, South Hobart, as indicated in Attachment A to the report, on nominal terms, for a period of ten (10) years (with a further ten (10) year option) with the Club to be responsible for facility outgoings.</p> <p>Pursuant to Sections 179 and Section 178 of the Local Government Act, community consultation be undertaken in accordance with the Act.</p> <p>(i) In accordance with the Act, should any public objections be received, a further report be presented back to the Council for consideration.</p> <p>In accordance with Council Policy 'Grant and Benefits Disclosure', any benefit recognised as part of the new lease be disclosed in the City's Annual Report.</p>	Director Parks and City Amenity	The Council decision is being actioned.

Ref.	Detail	Report / Action	Action Officer	Comments				
25	Joggers Loop, Queens Domain - Proposed Renaming Open Council 24/7/2017, item 25	<p>That the Queens Domain Joggers Loop be renamed 'Max's Infinity Loop' in honour of Max Cherry OAM, a former Hobart athletics coach and trainer.</p> <p>(i) Pursuant to the Survey Co-ordination Act 1944, the Council submit the new name to the Nomenclature Board.</p> <p>Appropriate promotion of the new name of the facility be undertaken.</p>	Director Parks and City Amenity	The Council decision is being actioned.				
26	2017/18 Fees and Charges - Proposed Amendment Open Council 24/7/2017, item 28	<p>That the 2017/2018 fees and charges be amended to include the fee detailed in the below table:</p> <table><tr><th>Type of Fee/Charge</th><th>Proposed Listing</th></tr><tr><td>Major Event and Circus Booking - Performing Day – per day fee</td><td>\$455</td></tr></table>	Type of Fee/Charge	Proposed Listing	Major Event and Circus Booking - Performing Day – per day fee	\$455	Director Parks and City Amenity	The new fee is in place. Completed.
Type of Fee/Charge	Proposed Listing							
Major Event and Circus Booking - Performing Day – per day fee	\$455							

8. QUESTIONS WITHOUT NOTICE

Section 29 of the *Local Government (Meeting Procedures) Regulations 2015*.
File Ref: 13-1-10

An Alderman may ask a question without notice of the Chairman, another Alderman, the General Manager or the General Manager's representative, in line with the following procedures:

1. The Chairman will refuse to accept a question without notice if it does not relate to the Terms of Reference of the Council committee at which it is asked.
2. In putting a question without notice, an Alderman must not:
 - (i) offer an argument or opinion; or
 - (ii) draw any inferences or make any imputations – except so far as may be necessary to explain the question.
3. The Chairman must not permit any debate of a question without notice or its answer.
4. The Chairman, Aldermen, General Manager or General Manager's representative who is asked a question may decline to answer the question, if in the opinion of the respondent it is considered inappropriate due to its being unclear, insulting or improper.
5. The Chairman may require a question to be put in writing.
6. Where a question without notice is asked and answered at a meeting, both the question and the response will be recorded in the minutes of that meeting.
7. Where a response is not able to be provided at the meeting, the question will be taken on notice and
 - (i) the minutes of the meeting at which the question is asked will record the question and the fact that it has been taken on notice.
 - (ii) a written response will be provided to all Aldermen, at the appropriate time.
 - (iii) upon the answer to the question being circulated to Aldermen, both the question and the answer will be listed on the agenda for the next available ordinary meeting of the committee at which it was asked, where it will be listed for noting purposes only.

9. CLOSED PORTION OF THE MEETING

The following items were discussed: -

- | | |
|--------------|--|
| Item No. 1 | Minutes of the last meeting of the Closed Portion of the Council Meeting |
| Item No. 2 | Consideration of supplementary items to the agenda |
| Item No. 3 | Indications of pecuniary and conflicts of interest |
| Item No. 4 | Reports |
| Item No. 4.1 | Franklin Square, Hobart - Street Eats @ Franko (Friday Night Market) - Request to Amend Licence Agreement
LG(MP)R 15(2)(c)(iii) |
| Item No. 5 | Committee Action Status Report |
| Item No. 5.1 | Committee Actions - Status Report
LG(MP)R 15(2)(g) |
| Item No. 6 | Questions Without Notice |