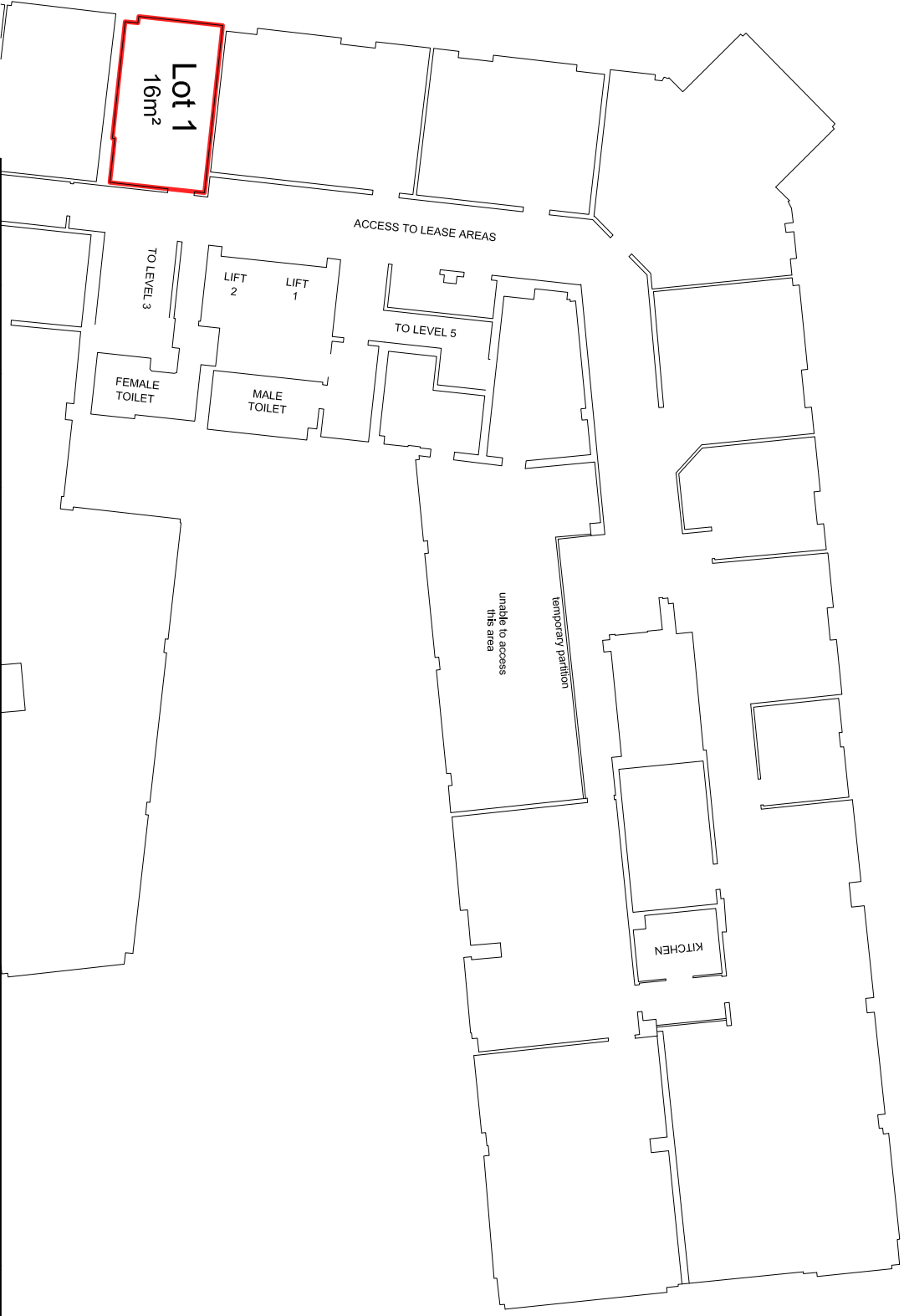


ELIZABETH STREET

DAVEY STREET

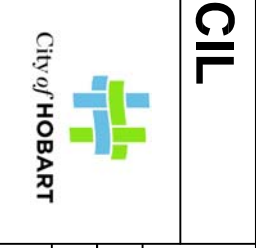


- NOTES:
- 1) LEASE AREA SHOWN SURROUNDED BY A HEAVY RED LINE
 - 2) LEASE AREA ROUNDED TO NEAREST WHOLE METRE.
 - 3) LEASE BOUNDARY IS THE INTERNAL FACE OF WALLS AND DOORS UNLESS SPECIFIED OTHERWISE

SURVEYED		SCALES	
DRAWN	MJH	1:200	
DESIGNED			
SUPERVISED			
Geocomp File		DATUM	
AutocAD File	F-934-603.dwg	Arbitrary	
APPROVED	MANAGER SURVEYING SERVICES		

HOBART CITY COUNCIL

PROPOSED LEASE
 CHRISTINA HENRI
 LEVEL 4 HCC COUNCIL CENTRE
 16 ELIZABETH STREET HOBART



F-934-603		MICROFILMED
AMENDMENT NO.		
DATE	4/6/2019	SURVEYING SERVICES