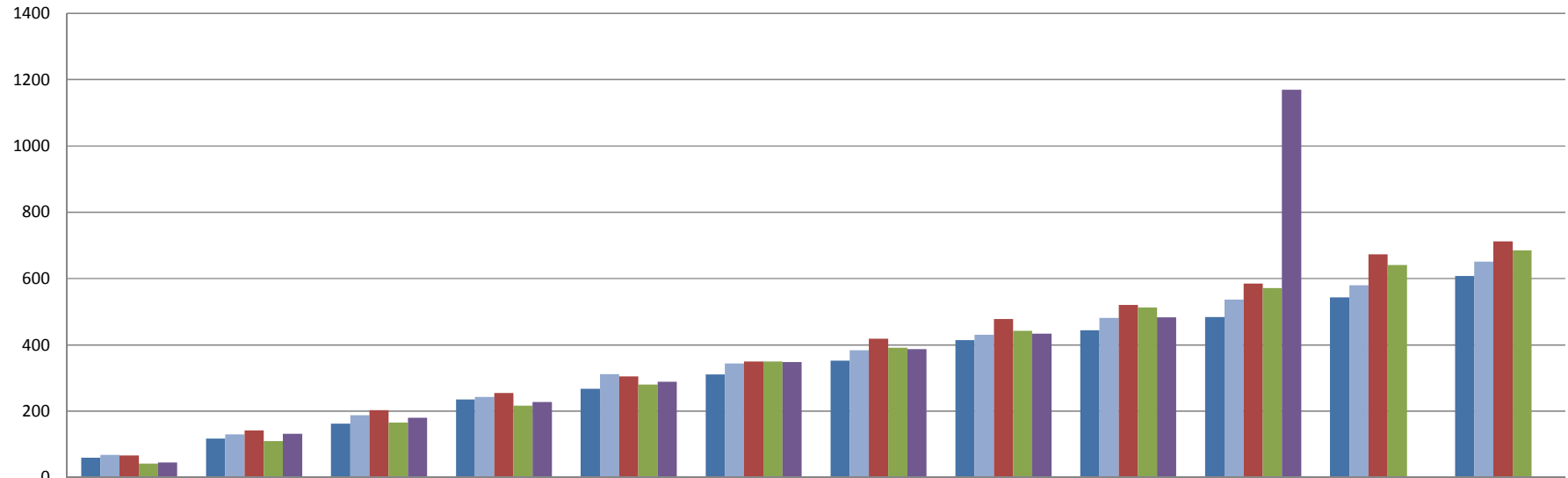


Building Permits Issued (Accumulative Monthly Totals) 5 Year Comparison 2013/14 - 2017/18



	1	2	3	4	5	6	7	8	9	10	11	12
■ 2013/2014	60	117	162	236	268	311	353	414	444	484	543	608
■ 2014/2015	68	130	188	243	312	344	384	430	481	537	580	651
■ 2015/2016	67	142	203	255	305	350	418	478	521	585	673	712
■ 2016/2017	42	110	166	217	280	350	392	443	513	571	641	685
■ 2017/2018	46	132	180	228	289	348	387	434	483	1169		